

Report

Altelier 3 bis – Synthese of landscape surveys

19 11 2019

Participants:

- Chris TIMMERMANS, PFO
- Sarie BUFFEL, PFO
- Bert BARLA, VLM
- Siska VAN DE STEENE, VLM
- Ann DEGRANDE, VLM
- Ghislain VANDERPOORTEN, VLM
- Elisabeth VAN BESIEN, VLM
- Bart BOLLENGIER, CPIE
- Reinhardt STRUBBE, ANB
- Vincent CHARRUAU, AGUR
- Sebastien LEBEL, AGUR
- Floria CHARLET, CUD
- ????

Agenda

1. Introduction (13.30)
2. Presentation landscape surveys (VLM & AGUR) (13.40)
3. Plenary discussion about the 2 landscape surveys (14.10)
4. Project proposal for 2 strategic projects – translating the objectives for landscape & identity into specific actions (14.40)
5. Role-play: convince your local community (15.15)
6. Conclusions (16.00)

Report

1. Introduction (13.30)

Introduction by Bert Barla, see powerpoint

2. Presentation landscape surveys (VLM & AGUR) (13.40)

See presentations by Ann De Grande and Vincent Charruau about the landscape surveys for both sides of the border.

3. Plenary discussion about the 2 landscape surveys (14.10)

Similarities between both surveys are :

- Identification of different landscape units and their relations
- Reinforcement of identity of different landscape units is main objective

Differences between both surveys are :

- Survey on the French side was specifically done for application for the Grand Site label and must be seen besides other surveys (like on ecological structures). Survey for Flanders is more broad as a base survey for the area
- The survey on the French sides focusses more on specific sites and areas and recreational connections between, while the survey on the Flemish sides focusses more on general principles on landscape and ecology (the project area on the Flemish side is also much larger).

Discussion with the participants by means of 3 questions

1. Should both sides of the border have the same vision and objectives in the Masterplan?

Conclusion: vision & objectives should on headlines be the same for FR en FL, but in the elaboration of them differences should be possible

2. Should the masterplan focus more on identity & experiencing the landscape or on conservation and recovery of landscape ecological processes?

Conclusion: the majority of the group thinks that strengthen the identity is the most important, but in doing so you also have to work on recovery of landscape ecological processes

3. Should the masterplan focus on well developed vision and objectives for the entire area or should it focus more on specific sites and actions

Conclusion: a shared vision is important for defining which actions are desirable. A shared vision is also important to align different actions

4. Project proposal for 2 strategic projects – translating the objectives for landscape & identity into specific actions & Role-play: convince your local community

Both Flemish and French participants elaborated a project proposal for a specific site, focussing on the various objectives for landscape and identity.

Flemish project proposal: Sandeshoved

Present situation



Landschappelijk overzicht van zuid naar noord: polders van de Zelte, Sandeshoved en overgangsgronden, Lenspolder, fossiele strandvlakte en Simlidiunen. Ten oosten van Sandeshoved infrastructuur voor verblijfsrecreatie, ten westen de agglomeratie van Nieuwpoort



Sandeshoved: Nieuwpoortsteenweg met zicht op restanten van de Kustbatterij WN Karthauserdünen en oud landbouwbedrijf



Kinderlaan met zicht op Kustbatterij WN Karthauserdünen en overgangsgroonden naar Lenspolder



Restanten van de Kustbatterij WN Karthauserdünen

Proposal

Vision Qualities Situation (- old dunes with dune transition)

- ~~2. War heritage~~ (historical heritage : landscape formation)
- Identity : unique landscape
- Open space in the landscape

Objectives

- Accessibility of the area
- Conservation of the area → Cultural → Dunes
- Part of a broader network of war heritage → Natural → Dune transition (agriculture) - small landscape elements
- Hydrologic retention
- Cooperation : public - private

Measures

- purchase of lands (most important : habitats directive area)
- Rest : cooperation of land owners
- Restoration of natural values : - Restoration of grey dune
- Recreation network : ~~walking network~~ connection with Simili dunes
- -

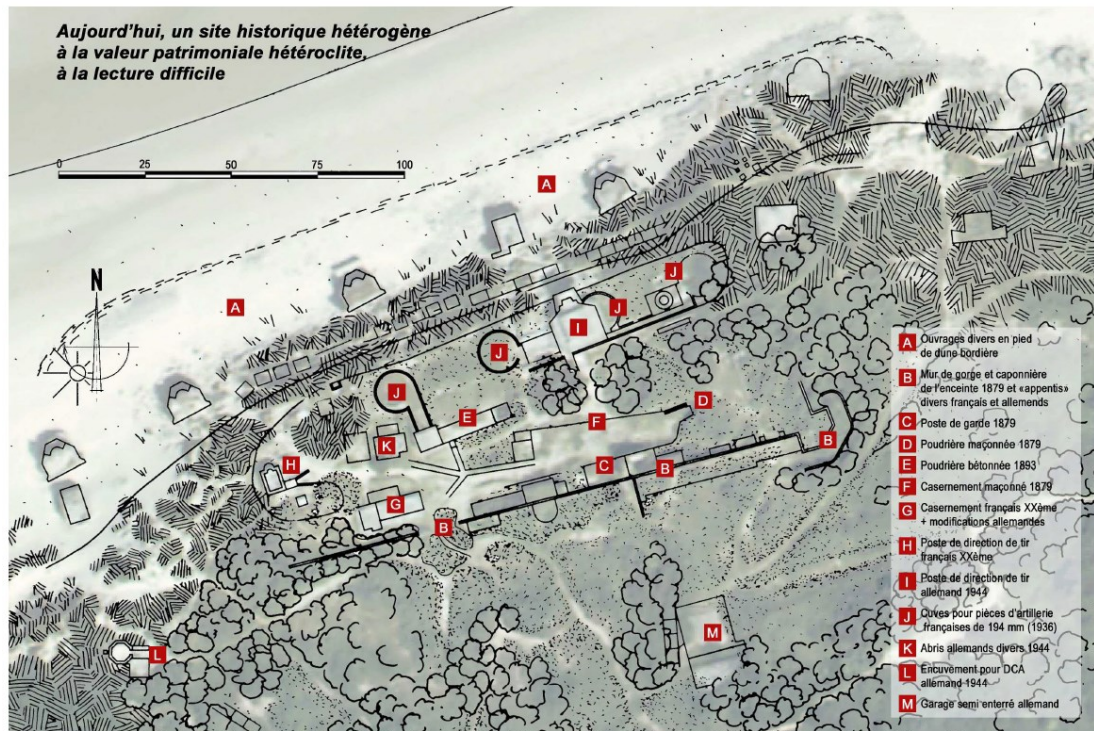
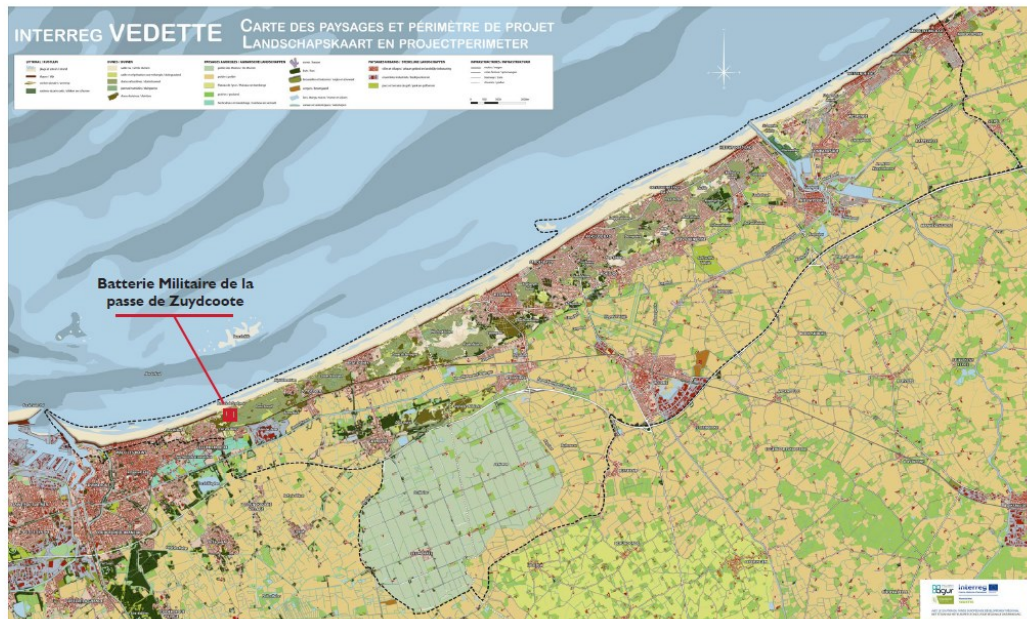
Questions

- Cooperation with project : communication to the population

French project proposal: la batterie de Zuydcoote

Present situation

Batterie Militaire de la passe de Zuydcoote à Leffrinckoucke

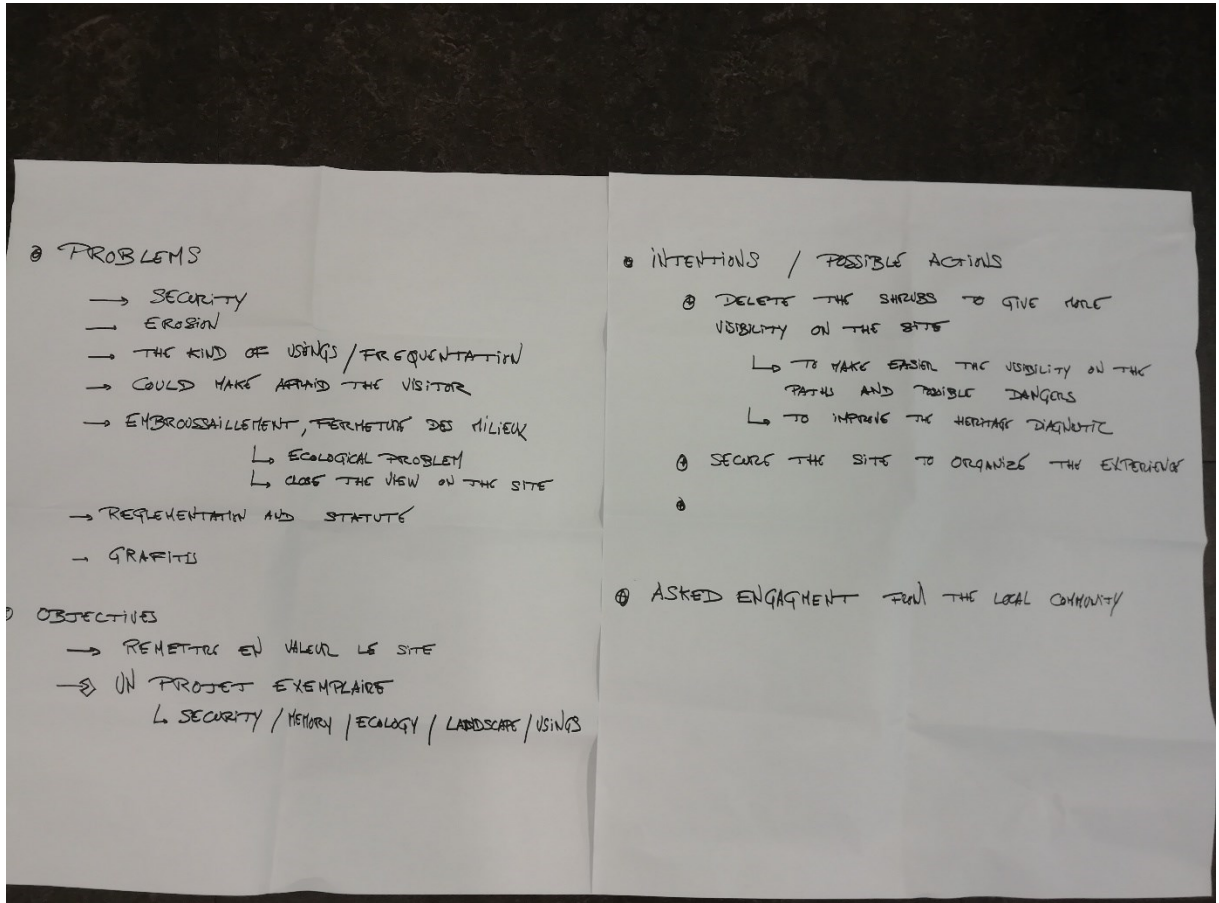
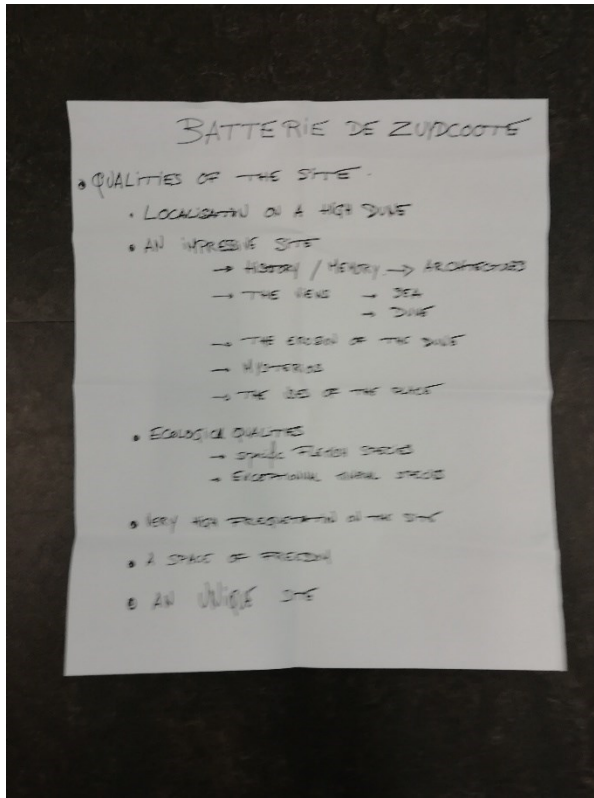


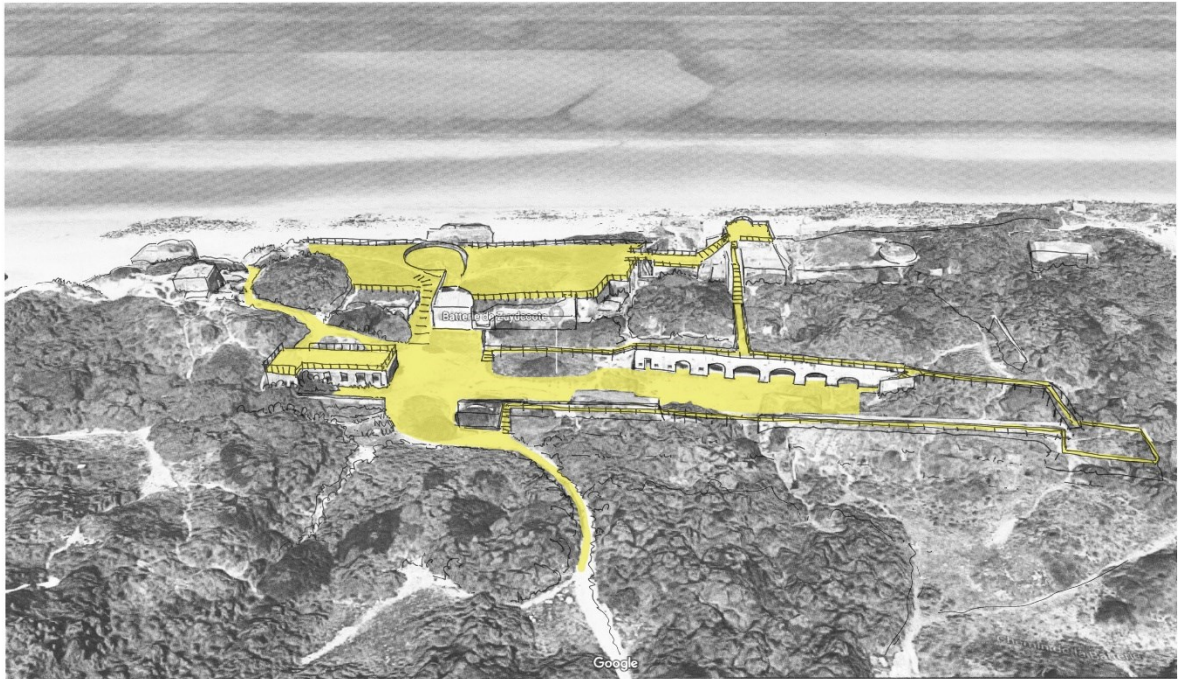
Document extrait du Schéma d'aménagement pour la sauvegarde, la mise en valeur et l'accès au public de la «batterie de la passe de Zuydcoote» (2011)





Proposal





5. Conclusions (16.00)

Some final thoughts of the participants about the workshop:

- Reflection about objectives for the area was ok
- We tried to search to joint objectives, but we have our own way of working and thinking on both sides of the border
- It was difficult to comment each others cases, because of a lack of knowledge about the context
- It's good to elaborate more similar projects
- It would have been interesting if both groups would have worked on the same case in order to experience the differences in approach and way of working and thinking.